

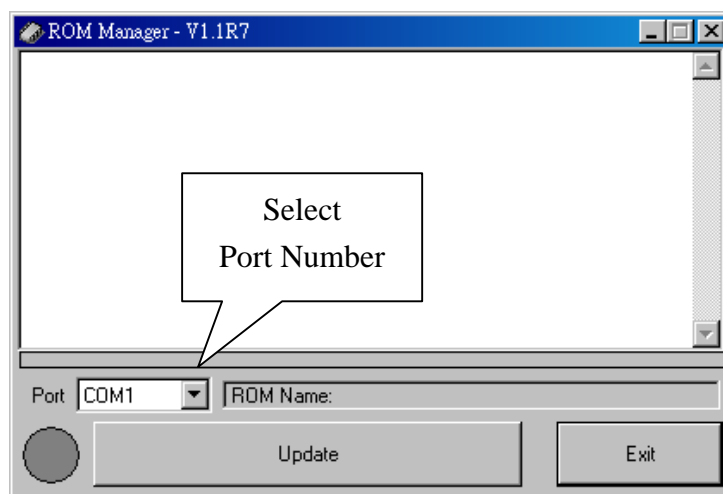
# FIRMWARE MANAGEMENT MODE (FMM)

## USER GUIDE

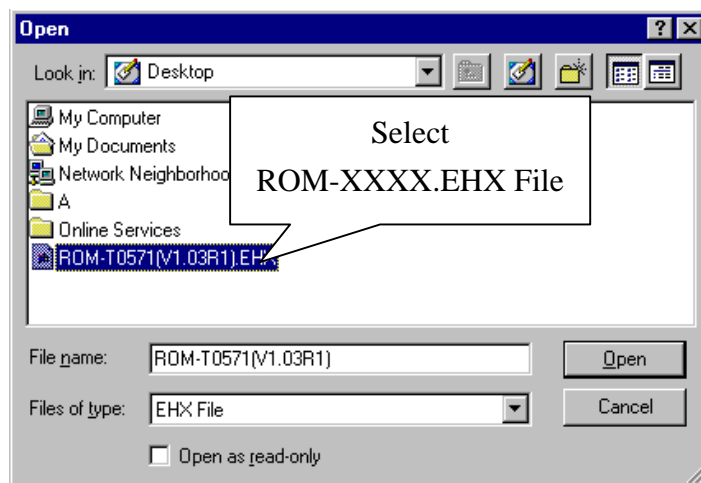
FMM allows you to quickly upgrade your machine's internal firmware via com port and also check validity of currently loaded firmware. Contact your dealer for most recent firmware upgrade files.

SETUP 1. Open the ROM Manager software.

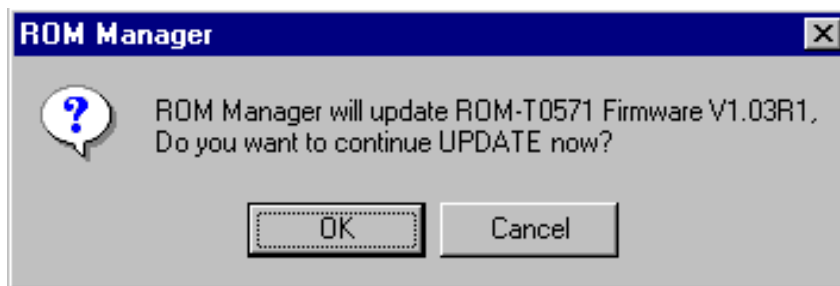
SETUP 2. Select connect to drive port number.



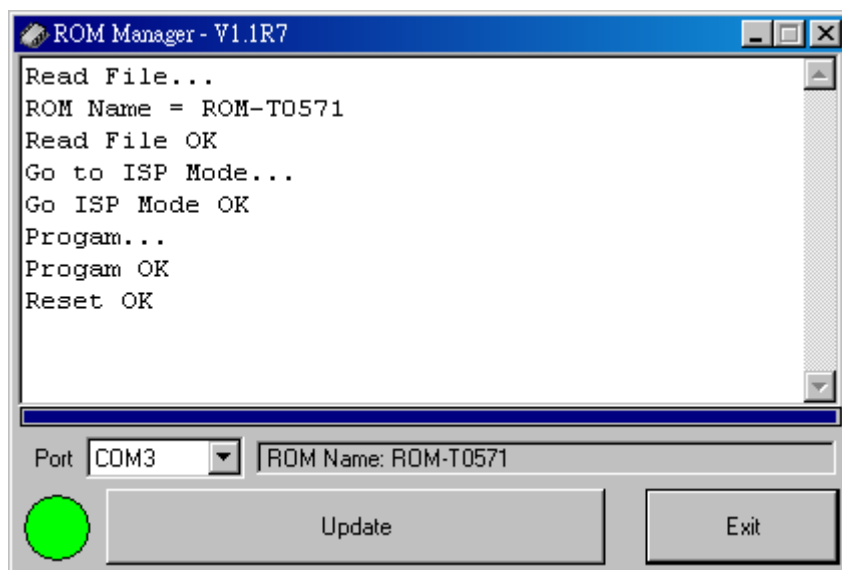
SETUP 3. Press "Update" function key and select new ROM-XXXX.EHX file



SETUP 4. Check Version and then press “OK” update new firmware.



SETUP 5. Press “Exit” to leave ROM Manager.



**NOTE. If you can't go into FMM because of failure in updating firmware, please use hardware setting to go into FMM. Then execute the above procedure. For hardware setting, please refer to related users manual.**